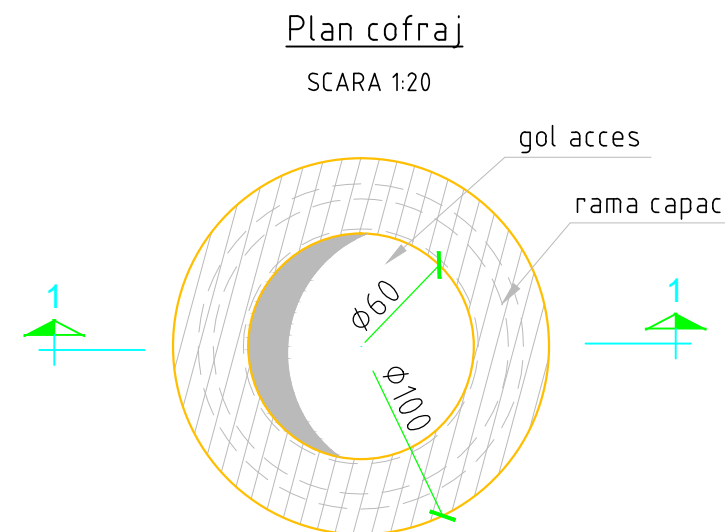


COFRAJ SI ARMARE PLACA PREFABRICATA

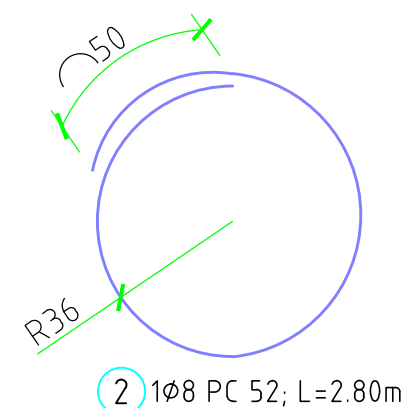
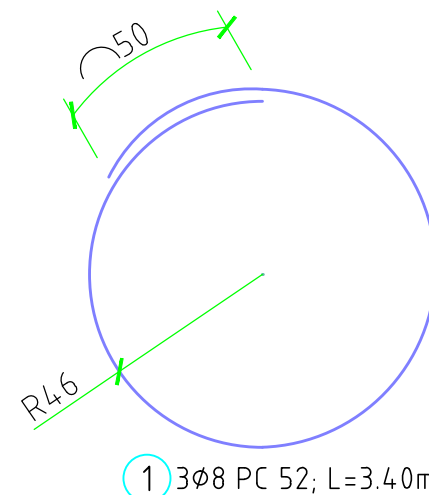
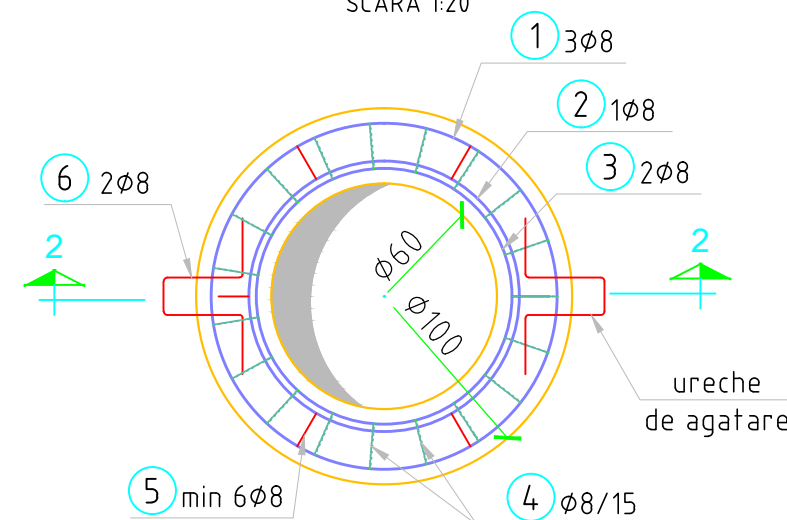
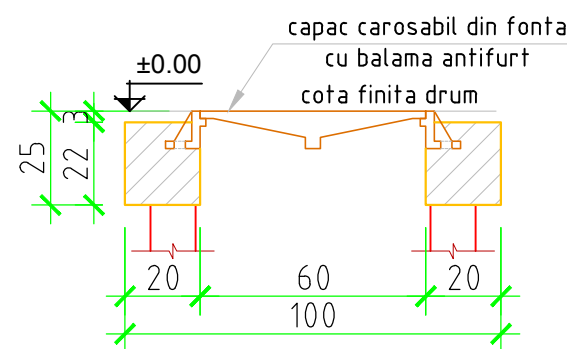
Armare placa prefabricata la cota ±0.00

SCARA 1:20



Sețiunea 1-1

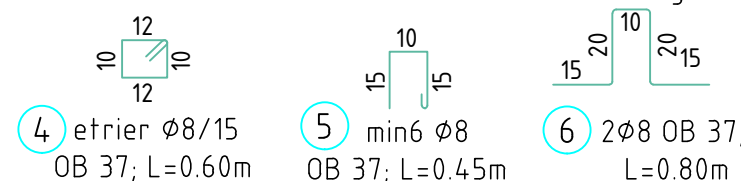
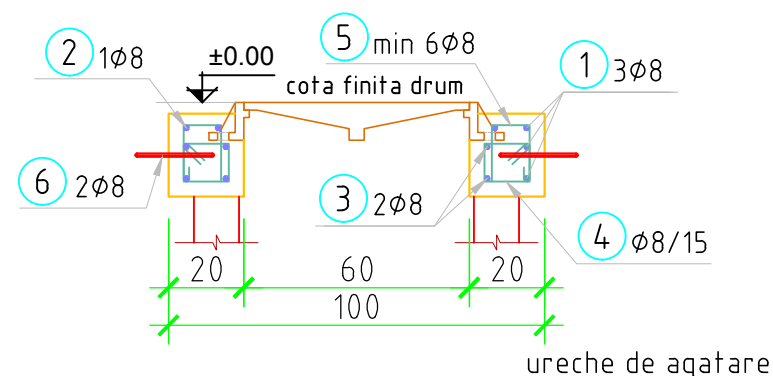
SCARA 1:20



Extras de armatura

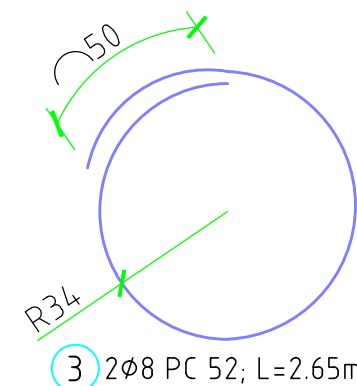
Sețiunea 2-2

SCARA 1:20



Extras de armatura

Marca	Ø	Buc	Lungime	OB 37 Ø 8	PC52 Ø 8
1	8	3	3,40		10,20
2	8	1	2,80		2,80
3	8	2	2,65		5,30
4	8	19	0,60	11,40	
5	8	4	0,45	1,80	
6	8	2	2,40	4,80	
ml/Ø				18,00	18,30
kg/ml				0,395	0,395
kg/Ø				7,11	7,23
TOTAL				7	7



BETON ARMAT
OTEL BETON

C25/30, XF4, XD3, XC4, CI0.2, Dmax 16, S3, P4, CEM II/A-S 32.5R
OB 37, PC 52

NOTA:

- Acoperirea nominala cu beton a armaturilor este:
-30 mm
- Zona superioara a caminului se va betona pana la cota 0.00(cota finita drum), daca partea carosabila nu este din asfalt.
- Capacul va fi carosabil cu rama rotunda, clasa D 400 si se va folosi pentru cai de circulatie pe strazi si statii de stationare pentru vehicule rutiere.
- Dimensiunile partiale ale armaturilor sunt date la interior.

Rev	Nume	Ver	Aprb	Data	Descriere
-----	------	-----	------	------	-----------

Autoritatea contractanta: S.C.AQUACARAS S.A. CARAS SEVERIN



Adresa: P-la Republicii, nr. 7, Resita
Jud. Caras Severin
Tel.: +40 255 212 458
Fax.: +40 255 214 421
E-mail: office@aquacaras.ro

Proiectant: **Consortiu S.C Eptisa Romania S.R.L. si Eptisa Servicios de Ingenieria S.L.**
Sos. Dudești-Pantelimon nr. 42, RAMS center, et. 5, corp A, sector 3, București
Tel.: +40 21 301 14 70
Fax: +40 21 301 14 80
www.eptisa.com

eptisa

Proiect: **MODERNIZAREA INFRASTRUCTURII DE APA SI APA UZATA IN JUDETUL CARAS SEVERIN - AGLOMERAREA RESITA**

Plansa: **Detaliu tip**
Placa din b.a. prefabricata pentru:
-camine de bransament amplasate pe carosabil, De 25, 32, 40, 63 mm
-camine de canalizare

Desenat: Ing. B. Paraschiv Data: Aprilie 2013
Verificat: Ing. M. Serbanoiu Data: Aprilie 2013
Aprobat: Ing. D. Spiridon Data: Aprilie 2013

Plansa nr. **CS-RE-PT/DA-A/C-R-03** Revizia **0**

Scara plansa: 1 :20